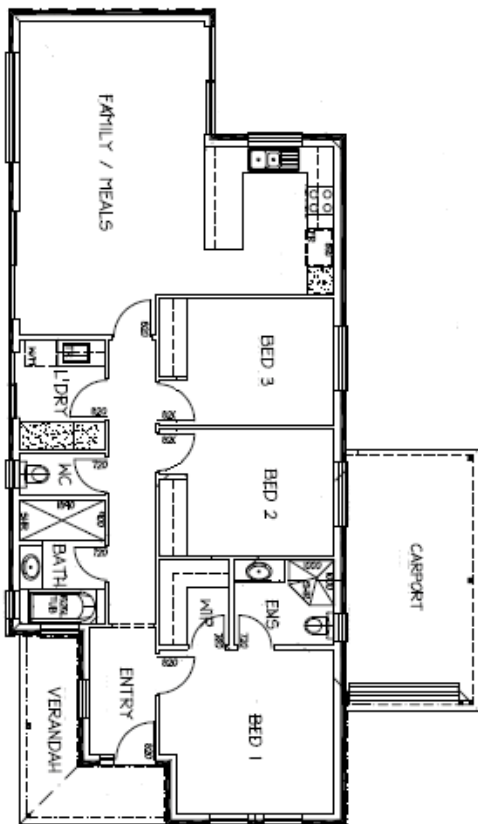


BOARDWALK

at Greentree



Lot 95 Boardwalk Drive, Paralowie

ATTRACTIVE TOWN COTTAGE ON CORNER BLOCK

Builder: Rossdale Homes

Price: \$334,300

3 bed | 2 bath | 1 car

Block Size: 290m²

Set on a corner block of 290sqm, this town cottage features a spacious floorplan with inclusions below:

- Fixed site and footing costs - no hidden extras!
- Feature facade
- Full Termi-mesh system
- 2.7m (9 foot) ceilings throughout, 25 degree pitched roof
- Remote garage roller door
- 600mm stainless steel Westinghouse appliances
- Rheem Integrity 27 continuous flow hot water service
- Dual recycled water connection
- NBN requirements including data, TV and phone points
- Alfresco under main roof is optional at an additional cost.

Rossdale Homes does not supply land. Package price and land availability is correct at time of publication and is subject to change without notice. Package price includes the Rossdale standard specification & price may vary depending on selections & additional inclusions. For full list of detailed inclusions please speak to a Sales Consultant. Package price excludes external lighting, landscaping, fencing, telephone service, stamp duty on land, legal fees and conveyancing costs including titles and property report. Home design may be subject to Developer approval. Typical Site cost allowance is included in the price.



RLA247093